



10630 Wiles Road, Coral Springs, FL 33076 • toll free: 800.358.2468 • office: 954.345.9800 • fax: 954.345.0507 • http://www.advantagemed.com

DATASCOPE® QUICK REFERENCE GUIDE

MOST COMMONLY PURCHASED DATASCOPE® ACCESSORIES SHOWN. FOR COMPLETE LISTING OF PRODUCTS CALL OR VISIT OUR WEBSITE.

YOKEMATE LWS® (UNIVERSAL LEAD WIRE SYSTEM)



YOKEMATE LWS® ADAPTERS

Hardwired
3 Lead - YM-823DIN
5 Lead - YM-825DIN



UNIVERSAL CABLES

3 Lead - CB-73340R
5 Lead - CB-73540R
6 Lead - CB-73640R
10 Lead (5+5) - CB-735540R
10 Lead (6+4) - CB-736440R



AMC&E LEAD WIRES

Disposable Snap
3 Lead - LW-209DS50/3A
5 Lead - LW-209DS50/5A
6 Lead - LW-209DS50/6A

Disposable Pinch
3 Lead - LW-309DS50/3A
5 Lead - LW-309DS50/5A
6 Lead - LW-309DS50/6A

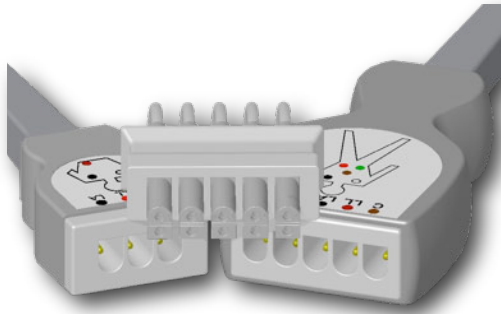


Reusable Snap
3 Lead - LW-209DS50/3A
5 Lead - LW-209DS50/5A
6 Lead - LW-209DS50/6A

Reusable Pinch
3 Lead - LW-309DS50/3A
5 Lead - LW-309DS50/5A
6 Lead - LW-309DS50/6A

★ YokeMate LWS® can standardize Datascope® hardwired and telemetry monitors with most other manufacturers, allowing one set of lead wires to be used throughout the hospital.

DIRECT CONNECT ECG CABLES AND LEAD WIRES



Datascope® Patient Cables

5 Lead		
▶ CB-83516/DS	10 feet	0012-00-1255-01



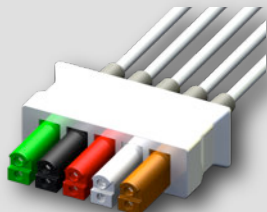
SNAP, PINCH, & MINI PINCH*

* Mini Pinch Available by Special Order Only

Common Direct Connect Lead Wires (Combined)

AMC&E OFFERS 24", 40", AND 51" REUSABLE DATASCOPE® DIRECT CONNECT LEAD WIRES

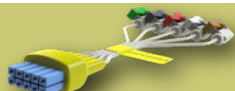
DATASCOPE® COMBINED LEAD WIRES*



REUSABLE

SNAP			PINCH		
3 Lead			3 Lead		
▶ LW-2700024/3DS	24 inch	0012-00-1261-08	▶ LW-3700024/3DS	24 inch	0012-00-1262-08
▶ LW-2700051/3DS	51 inch	0012-00-1261-09	▶ LW-3700040/3DS	40 inch	0012-00-1262-09
5 Lead			5 Lead		
▶ LW-2700024/5DS	24 inch	0012-00-1261-02	▶ LW-3700024/5DS	24 inch	0012-00-1262-02
▶ LW-2700051/5DS	51 inch	0012-00-1261-03	▶ LW-3700040/5DS	40 inch	0012-00-1262-03
▶ LW-27000MX/5DS	Mixed Length	0012-00-1261-13	▶ LW-37000MX/5DS	Mixed Length	0012-00-1262-13

DATASCOPE® PANORAMA TELEMETRY LEAD WIRES



DISPOSABLE

SNAP			PINCH		
5 Lead			5 Lead		
▶ LW-291DS50/5A	50 inch	No Equivalent	▶ LW-391DS50/5A	50 inch	No Equivalent

◆ At this time, AMC&E does not offer a disposable direct connect for Datascope® monitors. If a hospital wants disposables, use YokeMate LWS® cables and lead wires.

■ AMC&E Part Number

■ Datascope® OEM Part Number



10630 Wiles Road, Coral Springs, FL 33076 • toll free: 800.358.2468 • office: 954.345.9800 • fax: 954.345.0507 • http://www.advantagemed.com

DATASCOPE® QUICK REFERENCE GUIDE (CONT.)

MOST COMMONLY PURCHASED DATASCOPE® ACCESSORIES SHOWN. FOR COMPLETE LISTING OF PRODUCTS CALL OR VISIT OUR WEBSITE.

CUFFS



* AMC&E cuff sizes differ slightly from Datascope® OEM. Please refer to sizes of each. For other cuff connections, visit our website.

Reusable - Dual Tube		
▶ CU-US0814HP	0998-00-0003-51	1 Cuff
▶ CU-US1320HP	0998-00-0003-52	1 Cuff
▶ CU-US1826HP	0998-00-0003-53	1 Cuff
▶ CU-US2635HP	0998-00-0003-54	1 Cuff
▶ CU-US2345HP	No Equivalent	1 Cuff
▶ CU-US4560HP	0998-00-0003-56	1 Cuff
▶ CU-US3860HP	No Equivalent	1 Cuff

- Infant (8-14 cm) -
- Pediatric (13-20 cm) -
- Small Adult (18-26 cm) -
- Adult (26-35 cm) -
- Long Adult (23-45 cm) -
- Extra Long Adult (45-60 cm) -
- Large Adult / Thigh (38-60 cm) -

Disposable - Dual Tube		
▶ CU-ST0814HP-20	0683-07-0031-01	Box of 20 Cuffs
▶ CU-ST1320HP-20	0683-07-0032-01	Box of 20 Cuffs
▶ CU-ST1826HP-20	0683-07-0033-01	Box of 20 Cuffs
▶ CU-ST2635HP-20	0683-07-0034-01	Box of 20 Cuffs
▶ CU-ST2345HP-20	No Equivalent	Box of 20 Cuffs
▶ CU-ST4560HP-10	0683-07-0036-01	Box of 10 Cuffs
▶ CU-ST3860HP-10	No Equivalent	Box of 10 Cuffs

HOSES



▶ HO-S04158-10 - 0004-00-0060-03



▶ HO-S04158-10 - No Equivalent



▶ HO-S15158-10 - 0683-04-0004



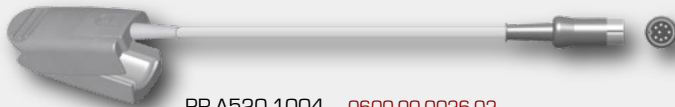
▶ HO-S15158-10 - No Equivalent

SpO₂

Datascope® Compatible Oximetry Shown

LARGE FINGER CLIP

ADAPTER CABLE (IF REQUIRED)



PR-A520-1004 - 0600-00-0026-02

No adapter cable required. PR-A520-1004 is a direct connect SpO₂ probe.

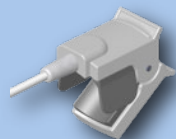


PR-A520-1004N - 0600-00-0026-01



CB-A400-1004A - 001200-0516-02

OTHER AVAILABLE PROBES / SENSORS



Small Finger Probes



Ear Clips



Y Sensors