



GE® QUICK REFERENCE GUIDE

MOST COMMONLY PURCHASED GE® ACCESSORIES SHOWN. FOR COMPLETE LISTING OF PRODUCTS CALL OR VISIT OUR WEBSITE.

YOKEMATE LWS® (UNIVERSAL LEAD WIRE SYSTEM)



YOKEMATE LWS® ADAPTERS

Hardwired

3 Lead - YM-513DIN
5 Lead - YM-515DIN
6 Lead - YM-516DIN

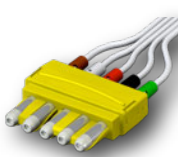
Apex Pro FH Telemetry

5 / 6 Lead - YM-916DIN-FH



UNIVERSAL CABLES

3 Lead - CB-733006R
5 Lead - CB-735006
6 Lead - CB-736006
10 Lead (5+5) - CB-7355006
10 Lead (6+4) - CB-7364006



AMC&E LEAD WIRES

Disposable Snap

3 Lead - LW-209DS50/3A
5 Lead - LW-209DS50/5A
6 Lead - LW-209DS50/6A

Disposable Pinch

3 Lead - LW-309DS50/3A
5 Lead - LW-309DS50/5A
6 Lead - LW-309DS50/6A



Reusable Snap

3 Lead - LW-209DS50/3A
5 Lead - LW-209DS50/5A
6 Lead - LW-209DS50/6A

Reusable Pinch

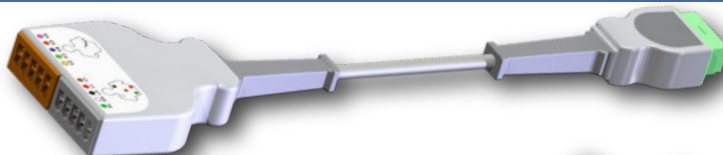
3 Lead - LW-309DS50/3A
5 Lead - LW-309DS50/5A
6 Lead - LW-309DS50/6A

* YokeMate LWS® can standardize GE® hardwired and Apex Pro FH transmitters to use one set of lead wires. It can also standardize GE® with most other manufacturers, allowing a hospital to use one set of lead wires throughout.

GE® PATIENT CABLES



5 Lead - CB-515006 412931-001
6 Lead - CB-516006 No Equivalent
10 Lead - CB-5110006 416035-001



COMMON GE® DIRECT CONNECT LEAD WIRES (GROUPED AND COMBINED)

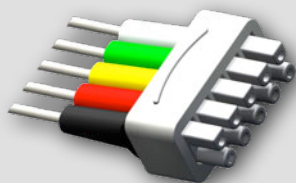
AMC&E OFFERS 29" AND 51" REUSABLE GE® DIRECT CONNECT LEAD WIRES



SNAP, PINCH, & MINI PINCH*

* Mini Pinch Available by Special Order Only

GE® COMBINED LEAD WIRES



REUSABLE

SNAP			
5 Lead			
▶ LW-2400029/5A	29 inch		411200-001
▶ LW-2400051/5A	51 inch		411200-002
▶ LW-24000MX/5A	Mixed Length		411200-005
▶ LW-2400029/5V	29 inch (V-Leads)		416468-003
6 Lead			
▶ LW-2400029/6A	29 inch		421930-001

PINCH			
5 Lead			
▶ LW-3400029/5A	29 inch		414556-001
▶ LW-3400051/5A	51 inch		414556-002
▶ LW-34000MX/5A	Mixed Length		414556-005
▶ LW-3400029/5V	29 inch (V-Leads)		416467-003
6 Lead			
▶ LW-3400029/6A	29 inch		421932-001

GE® GROUPED LEAD WIRES



REUSABLE

SNAP			
3 Lead			
▶ LW-2410029/3A	29 inch		411203-001
▶ LW-2410051/3A	51 inch		411203-002
5 Lead			
▶ LW-2410029/5A	29 inch		411202-001
▶ LW-2410051/5A	51 inch		411202-002
▶ LW-24100MX/5A	Mixed Length		411202-005

PINCH			
3 Lead			
▶ LW-3410029/3A	29 inch		412682-001
▶ LW-3410051/3A	51 inch		412682-002
5 Lead			
▶ LW-3410029/5A	29 inch		412681-001
▶ LW-3410051/5A	51 inch		412681-002
▶ LW-34100MX/5A	Mixed Length		412681-005



DISPOSABLE

5 Lead			
▶ LW-241DS50/5A	50 inch Ribbon		No Equivalent
6 Lead			
▶ LW-241DS50/6A	50 inch Ribbon		No Equivalent

5 Lead			
▶ LW-341DS50/5A	50 inch Ribbon		No Equivalent
6 Lead			
▶ LW-341DS50/6A	50 inch Ribbon		No Equivalent



GE® QUICK REFERENCE GUIDE (CONT.)

MOST COMMONLY PURCHASED GE® ACCESSORIES SHOWN. FOR COMPLETE LISTING OF PRODUCTS CALL OR VISIT OUR WEBSITE.

CUFFS

For NeoNatal or Disposable Cuffs Call AMC&E



* AMC&E cuff sizes differ slightly from GE® OEM. Please refer to sizes of each.

2-Tube Screw Connector			
▶ CU-UD0814DM	002783	1 Cuff	
▶ CU-UD1320DM	002781	1 Cuff	
▶ CU-UD1826DM	002779	1 Cuff	
▶ CU-UD2635DM	002774	1 Cuff	
▶ CU-UD2345DM	No Equivalent	1 Cuff	
▶ CU-UD4560DM	002791	1 Cuff	
▶ CU-UD3860DM	002796	1 Cuff	

- Infant (8-14 cm) -
- Pediatric (13-20 cm) -
- Small Adult (18-26 cm) -
- Adult (26-35 cm) -
- Long Adult (23-45 cm) -
- Extra Long Adult (45-60 cm) -
- Large Adult / Thigh (38-60 cm) -

2-Tube Female Quick Coupler			
▶ CU-UD0814MQ	002200	1 Cuff	
▶ CU-UD1320MQ	002201	1 Cuff	
▶ CU-UD1826MQ	002202	1 Cuff	
▶ CU-UD2635MQ	002203	1 Cuff	
▶ CU-UD2345MQ	No Equivalent	1 Cuff	
▶ CU-UD4560MQ	002204	1 Cuff	
▶ CU-UD3860MQ	002205	1 Cuff	

HOSES



Dual Female Threaded - (CN-BP09 to CN-BP09)

HO-D09096-12 - 008841



Dual Female Threaded - (CN-BP34 to CN-BP09)

HO-D3409098-12 - 9461-217



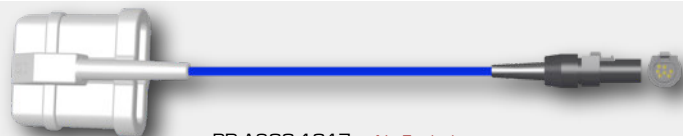
Dual Body Insert Coupler - (CN-BP34 to CN-BP17)

HO-D34178-12 - 414873-001

SPO₂

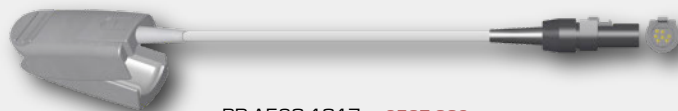
Ohmeda® and Nellcor® (Non-OximMax) Probes

SOFT TIP



PR-A900-1017 - No Equivalent

LARGE FINGER CLIP



PR-A520-1017 - 9587-002



PR-A900-1011N - No Equivalent



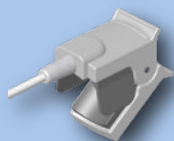
PR-A520-1011N - 407705-006

Required Adapter Cable



CB-A400-1102A - 2006644-001

OTHER AVAILABLE PROBES / SENSORS



Small Finger Probes



Ear Clips



Y Sensors