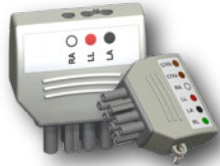




## NIHON KOHDEN® QUICK REFERENCE GUIDE

**MOST COMMONLY PURCHASED NK ACCESSORIES SHOWN. FOR COMPLETE LISTING OF PRODUCTS CALL OR VISIT OUR WEBSITE.**

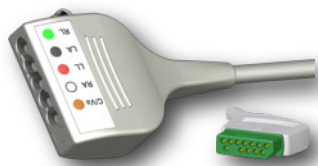
### YOKEMATE LWS® (UNIVERSAL LEAD WIRE SYSTEM)



#### YOKEMATE LWS® ADAPTERS

Hardwired

- 3 Lead - YM-843DIN
- 6 Lead - YM-846DIN



#### UNIVERSAL CABLES

- 3 Lead - CB-733600
- 5 Lead - CB-735600
- 6 Lead - CB-736600
- 10 Lead (5+5) - CB-7355600
- 10 Lead (6+4) - CB-7364600



#### AMC&E LEAD WIRES

Disposable Snap

- 3 Lead - LW-209DS50/3A
- 5 Lead - LW-209DS50/5A
- 6 Lead - LW-209DS50/6A

Disposable Pinch

- 3 Lead - LW-309DS50/3A
- 5 Lead - LW-309DS50/5A
- 6 Lead - LW-309DS50/6A



Reusable Snap

- 3 Lead - LW-209DS50/3A
- 5 Lead - LW-209DS50/5A
- 6 Lead - LW-209DS50/6A

Reusable Pinch

- 3 Lead - LW-309DS50/3A
- 5 Lead - LW-309DS50/5A
- 6 Lead - LW-309DS50/6A

★ YokeMate LWS® can standardize Nihon Kohden® hardwired monitors with most other manufacturers, allowing one set of lead wires to be used throughout the hospital.

### DIRECT CONNECT ECG CABLES AND LEAD WIRES



#### Nihon Kohden® Patient Cables

6 Lead		
▶ CB-85600	10 feet	JC-906PA



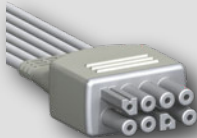

SNAP, PINCH, & MINI PINCH\*

\* Mini Pinch Available by Special Order Only

#### Common Direct Connect Lead Wires (Grouped)

**AMC&E OFFERS 29", AND MIXED LENGTH REUSABLE NIHON KOHDEN® DIRECT CONNECT LEAD WIRES**

#### NIHON KOHDEN® GROUPED LEAD WIRES

 <b>REUSABLE</b>	SNAP			PINCH		
	<b>3 Lead</b>			<b>3 Lead</b>		
	▶ LW-2810029/3A	29 inch	BR-913PA	▶ LW-3810029/3A	29 inch	BR-903PA
<b>6 Lead</b>			<b>6 Lead</b>			
▶ LW-28100MX/6A	Mixed Length	BR-916PA	▶ LW-38100MX/6A	Mixed Length	BR-906PA	
 <b>DISPOSABLE</b>	SNAP			PINCH		
	<b>6 Lead</b>			<b>6 Lead</b>		
	▶ LW-281DS50/6A	50 inch	No Equivalent	▶ LW-381DS50/6A	50 inch	No Equivalent



10630 Wiles Road, Coral Springs, FL 33076 • toll free: 800.358.2468 • office: 954.345.9800 • fax: 954.345.0507 • http://www.advantagemed.com

## NIHON KOHDEN® QUICK REFERENCE GUIDE (CONT.)

**MOST COMMONLY PURCHASED NK ACCESSORIES SHOWN. FOR COMPLETE LISTING OF PRODUCTS CALL OR VISIT OUR WEBSITE.**

### CUFFS

For NeoNatal Cuffs Call AMC&E



\* AMC&E cuff sizes differ slightly from Nihon Kohden® OEM. Please refer to sizes of each. For other cuff connections, visit our website.

Reusable - Single Tube Bayonet		
▶ CU-US0814MMQ	NK-YP-960T	1 Cuff
▶ CU-US1320MMQ	NK-YP-961T	1 Cuff
▶ CU-US1826MMQ	NK-YP-962T	1 Cuff
▶ CU-US2635MMQ	NK-YP-963T	1 Cuff
▶ CU-US2345MMQ	No Equivalent	1 Cuff
▶ CU-US4560MMQ	NK-YP-964T	1 Cuff
▶ CU-US3860MMQ	NK-YP-965T	1 Cuff

Disposable - Single Tube Bayonet		
▶ CU-ST0814MMQ-20	No Equivalent	20 Cuffs
▶ CU-ST1320MMQ-20	No Equivalent	20 Cuffs
▶ CU-ST1826MMQ-20	No Equivalent	20 Cuffs
▶ CU-ST2635MMQ-20	No Equivalent	20 Cuffs
▶ CU-ST2345MMQ-20	No Equivalent	20 Cuffs
▶ CU-ST4560MMQ-10	No Equivalent	10 Cuffs
▶ CU-ST3860MMQ-10	No Equivalent	10 Cuffs

- Infant (8-14 cm) -
- Pediatric (13-20 cm) -
- Small Adult (18-26 cm) -
- Adult (26-35 cm) -
- Long Adult (23-45 cm) -
- Extra Long Adult (45-60 cm) -
- Large Adult / Thigh (38-60 cm) -

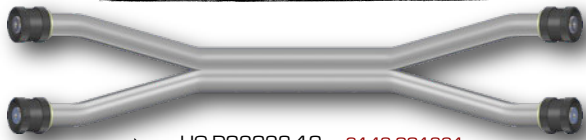
### HOSES



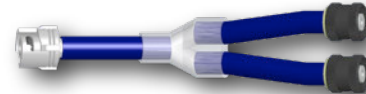
▶ HO-S07048-10 - 110088



▶ HO-S17368-25 - No Equivalent



▶ HO-D09098-10 - 6143-001321



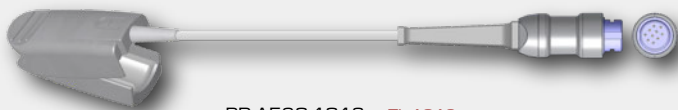
▶ HO-Y172727 - No Equivalent

**YN-901P Available through NK only**

NK Compatible Oximetry Shown

#### LARGE FINGER CLIP

#### ADAPTER CABLE (IF REQUIRED)



PR-A520-1013 - TL-101S

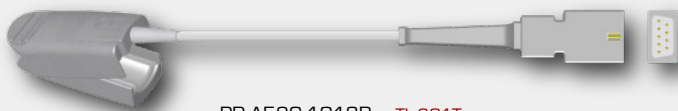
No adapter cable required. PR-A520-1013 is a direct connect SpO<sub>2</sub> probe.



PR-A520-1013N - TLS-101S



CB-A400-1013A - NK-CABSA-AL



PR-A520-1013P - TL-201T

Adapter cable only available from NK

#### Additional Adapter Cables



CB-A400-1011SC - NK-SCP-10



CB-A400-10110E - NK-OEM-10