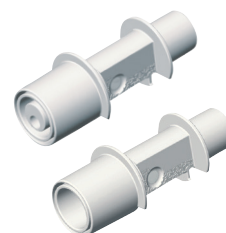
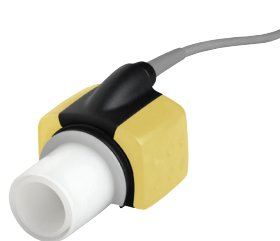


SUPPLIES & ACCESSORIES

CAPNOGRAPHY & MULTIGAS



The Nomoline™ multi-patient use adapter for sidestream monitoring offers a cost effective solution for both intubated and non-intubated patients. The sophisticated technology removes water from the sample line and reduces potential for water intrusion and cross contamination. Utilizing the Nomoline multi-patient use adapter in conjunction with single use CO₂ cannulas, we are able to offer a capnography solution at a much lower cost..



(92516) Capno Pod (92517) Capnography Module (92518) Multi-Gas Module

Order Code	Description	Qty
------------	-------------	-----

Sidestream Monitoring Supplies

Multi-patient use Nomoline Adapter - required for sidestream monitoring



103-0234-00	Sidestream Nomoline adapter with female luer lock. To be used with single patient use cannulas , sidestream sampling lines and T-adapters. T-adapters require a sampling line for use.	Multi-use	25/Box
-------------	--	-----------	--------



015-0683-00	Sidestream Nomoline adapter with sampling line	Single Use	25/Box
-------------	--	------------	--------

CO2 Nasal Cannula with male luer connector



704-0176-00	Adult	2 m/6.5 ft	25/Box
704-0177-00	Pediatric	2 m/6.5 ft	25/Box
704-0178-00	Infant	2 m/6.5 ft	25/Box
704-0184-00	Adult	3 m/10 ft	25/Box
704-0185-00	Pediatric	3 m/10 ft	25/Box

CO2 Nasal Cannula w/O2 Delivery and male luer connector



704-0181-00	Adult	2 m/7 ft	25/Box
704-0180-00	Pediatric	2 m/7 ft	25/Box
704-0179-00	Infant	2 m/7 ft	25/Box
704-0186-00	Adult	3 m/10 ft	25/Box

CO2 Oral/Nasal Cannula w/O2 Delivery and male luer connector



704-0183-00	Adult	2 m/7 ft	25/Box
704-0182-00	Pediatric	2 m/7 ft	25/Box
704-0187-00	Adult	3 m/10 ft	25/Box
704-0189-00	Pediatric	3 m/10 ft	25/Box

The Nomoline™ multi-patient use adapter for sidestream monitoring offers a cost effective solution for both intubated and non-intubated patients. The sophisticated technology removes water from the sample line and reduces potential for water intrusion and cross contamination. Utilizing the Nomoline multi-patient use adapter in conjunction with single use CO₂ cannulas, we are able to offer a capnography solution at a much lower cost..



(92516) Capno Pod (92517) Capnography Module (92518) Multi-Gas Module

Order Code	Description	Qty
------------	-------------	-----

Sidestream Monitoring Supplies - Non-intubated patients

Emergency CO2 Nasal Cannula



704-0193-00	Adult	2 m/6.5 ft	25/Box
-------------	-------	------------	--------

Sampling Lines & Airway Adapters, single use



704-0191-00	Adult CO2 Sample Line w/ T-Adapter	2 m/6.5 ft	20/Box
-------------	------------------------------------	------------	--------



704-0192-00	Adult CO2 Sample Line w/ T-Adapter	3 m/10 ft	20/Box
-------------	------------------------------------	-----------	--------



166-7085-00	Sidestream sampling line with male luer lock on both ends	2 m/6.5 ft	25/Box
-------------	---	------------	--------



166-7121-00	Sidestream sampling line with male luer lock on both ends	3 m/10 ft	50/Box
-------------	---	-----------	--------



704-0175-00	Sidestream airway adapter/T-Adapter. Requires a sampling line for use.		25/Box
-------------	---	--	--------

Mainstream Monitoring Supplies for use only with the Capnography Module 92517 on intubated patients

Sensor & Airway Adapters - required for mainstream monitoring



010-1980-00	Mainstream sensor, reusable		1 Each
-------------	-----------------------------	--	--------



704-0173-00	Mainstream airway adapter, single use	Adult/Pediatric	25/Box
-------------	---------------------------------------	-----------------	--------







704-0174-00	Mainstream airway adapter, single use	Infant	10/Box
-------------	---------------------------------------	--------	--------

The Dual Capnography Module (91517) provides both sidestream and mainstream EtCO₂ capabilities in a single module. Supplies available for all patient types.









(91517)
Dual Capnography Module

Order Code	Description	Qty
Sidestream, Non-intubated, single patient use		
	CO₂ Nasal Cannula	
704-0010-00	Adult	10/Box
704-0012-00	Pediatric	10/Box
704-0011-00	Infant/Neonatal	10/Box
	CO₂ Nasal Cannula w/O₂ Delivery	
704-0014-00	Adult	10/Box
704-0016-00	Pediatric	10/Box
704-0015-00	Infant/Neonatal	10/Box
	CO₂ Oral/Nasal Cannula	
704-0017-00	Adult	10/Box
704-0019-00	Pediatric	10/Box
	CO₂ Oral/Nasal Cannula w/O₂ Delivery	
704-0020-00	Adult	10/Box
704-0022-00	Pediatric	10/Box

The Dual Capnography Module (91517) provides both sidestream and mainstream EtCO₂ capabilities in a single module. Supplies available for all patient types.



(91517)
Dual Capnography Module

Order Code	Description	Qty
Sidestream, Intubated, single patient use		
Sidestream - short term up to 12 hours (patient non-humidified)		
	704-0023-00 Airway adapter + sampling line, ET tube > 4.0 mm Adult/Ped	10/Box
	704-0024-00 Airway adapter + sampling line, ET tube ≤ 4.0 mm Ped/Infant	10/Box
	704-0027-00 CO ₂ sampling line w/male luer <i>Recommended for heat moisture exchange filters</i>	10/Box
Sidestream - long term up to 120 hours (patient humidified)		
	704-0025-00 Airway adapter + sampling line with Nafion®, ET tube > 4.0 mm Adult/Ped	10/Box
	704-0026-00 Airway adapter + sampling line with Nafion Ped/Infant	10/Box
	704-0028-00 CO ₂ sampling line w/male luer and Nafion <i>Recommended for heat moisture exchange filters</i>	10/Box

The Dual Capnography Module (91517) provides both sidestream and mainstream EtCO₂ capabilities in a single module. Supplies available for all patient types.



(91517)
Dual Capnography Module

Order Code	Description	Qty
------------	-------------	-----

Mainstream, for Intubated Patients Only

Mainstream Cable with Sensor



704-0001-00	CO ₂ sensor, reusable	1 Each
-------------	----------------------------------	--------



704-0006-00	Sensor cable holding clip	5/Pack
-------------	---------------------------	--------

Mainstream Airway Adapters, for use with CO₂ Sensor 704-0001-00



704-0005-00	CO ₂ airway adapter, single use	Adult	24/Box
-------------	--	-------	--------



704-0004-00	CO ₂ airway adapter, single use	Neonate	24/Box
-------------	--	---------	--------



704-0002-00	CO ₂ airway adapter, reusable	Adult	1 Each
-------------	--	-------	--------



704-0003-00	CO ₂ airway adapter, reusable	Neonate	1 Each
-------------	--	---------	--------

For use with Ultraview SL™ Multigas Analyzers (90518 & 91518).



(90518)



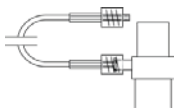
(91518)

Multigas Analyzers

Order Code	Description	Qty
------------	-------------	-----

Multigas Supplies & Accessories

Anesthetic Agent Samples Lines



015-0312-01	Anesthetic agent sample line with gas sampling tee and airway adapter, single use, Sampling tee: 22mm OD/15 mm ID x 15mm OD Sampling line: 1.22 mm/0.05 inches ID tubing (90518/91518)	213 cm/7 ft.	50/Box
-------------	--	--------------	--------



015-0313-01	Anesthetic agent sample line with gas sampling tee and airway adapter, single use, Sampling tee: 22mm OD/15 mm ID x 15mm OD Sampling line: 1.22 mm/0.05 inches ID tubing (90518/91518)	305 cm/10 ft.	50/Box
-------------	--	---------------	--------



162-0046-01	Anesthetic agent sample line with a male luer connector on each end, single use, 1.22 mm/.048 in ID tubing (90518/91518)	305 cm/10 ft.	50/Box
-------------	--	---------------	--------



162-0047-01	Anesthetic agent sample line with a male luer connector on each end, single use, 1.22 mm/.048 in ID tubing (90518/91518)	213 cm/7 ft.	50/Box
-------------	--	--------------	--------

Exhaust Scavenging



717-0408-00	Exhaust scavenging line with female luer connection on both ends, single use (90518)	2 m/7 ft.	5/Pack
-------------	--	-----------	--------

MULTIGAS ANALYZER SUPPLIES & ACCESSORIES



For use with Ultraview SL™ Multigas Analyzers (90518 & 91518).



(90518)



(91518)

Multigas Analyzers

Order Code	Description	Qty
------------	-------------	-----

Multigas Supplies & Accessories

Water Traps, Reusable



717-0447-00	D-FEND water trap cartridge, Black. Replace at least once every two months or when occluded (91518)	10/Pack
-------------	--	---------



717-0446-00	D-FEND water trap container (91518)	5/Pack
-------------	-------------------------------------	--------



717-0448-00	D-FEND+ water trap cartridge, green Replace at least once every 24 hours or when occluded (91518)	10/Pack
-------------	--	---------

Water Traps, Single Use



378-0050-00	TruLink water trap (90518)	1 Each
-------------	----------------------------	--------

MULTIGAS ANALYZER SUPPLIES & ACCESSORIES



For use with Ultraview SL™ Multigas Analyzers (90518 & 91518).



(90518)



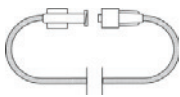
(91518)

Multigas Analyzers

Order Code	Description	Qty
------------	-------------	-----

Multigas Supplies & Accessories

Nafion® Tubing



369014-003	Nafion tubing, single use Use it in-line with sampling line to reduce moisture and prevent clogging (90518)	61 cm/24 in	1 Each
------------	--	-------------	--------

Filter Cartridge



016-0428-00	Nafion tubing, single use Use it in-line with sampling line to reduce moisture and prevent clogging (90518)		1 Each
-------------	--	--	--------



050-1120-00	O ₂ sensor kit, micro-fuel cell (90518-B)		1 Each
-------------	--	--	--------